



* Japan's Geography

***This Power Point was Created by Matthew Iannucci of North Plainfield New Jersey. If you are not Matthew Iannucci of North Plainfield New Jersey and are using this presentation then you have stolen it and should feel shameful and sad...however, you have great taste in stolen educational material...basically you are a mystery wrapped in an enigma, good luck with that.**

* Japan's Geography

* Main Idea (Objective):



* Japan's mountains and islands isolated Japan and allowed it to develop a unique culture and society.

* Japan's Geography

* Lecture Focus (Essential Question):



* Have you ever been in a place with no television, internet or phone? How would you feel if you did not know what was going on outside your home? Lets look at Japans isolation and see how it shaped their society.

* Japan's Geography

* Japan is a chain of islands that stretches north to south in the Northern Pacific Ocean.



* Japan's islands number more than 3,000...many of which are extremely tiny.

* Japan's Geography

* For centuries, most Japanese have lived on the four largest islands:

* **Hokkaido** (Hah-Ky-Doh)

* **Honshu** (Hahn-Shoo)

* **Shikoku** (Shih-Koh-Koo)

* **Kyushu** (Kee-OO-Shoo)



* Japan's Geography

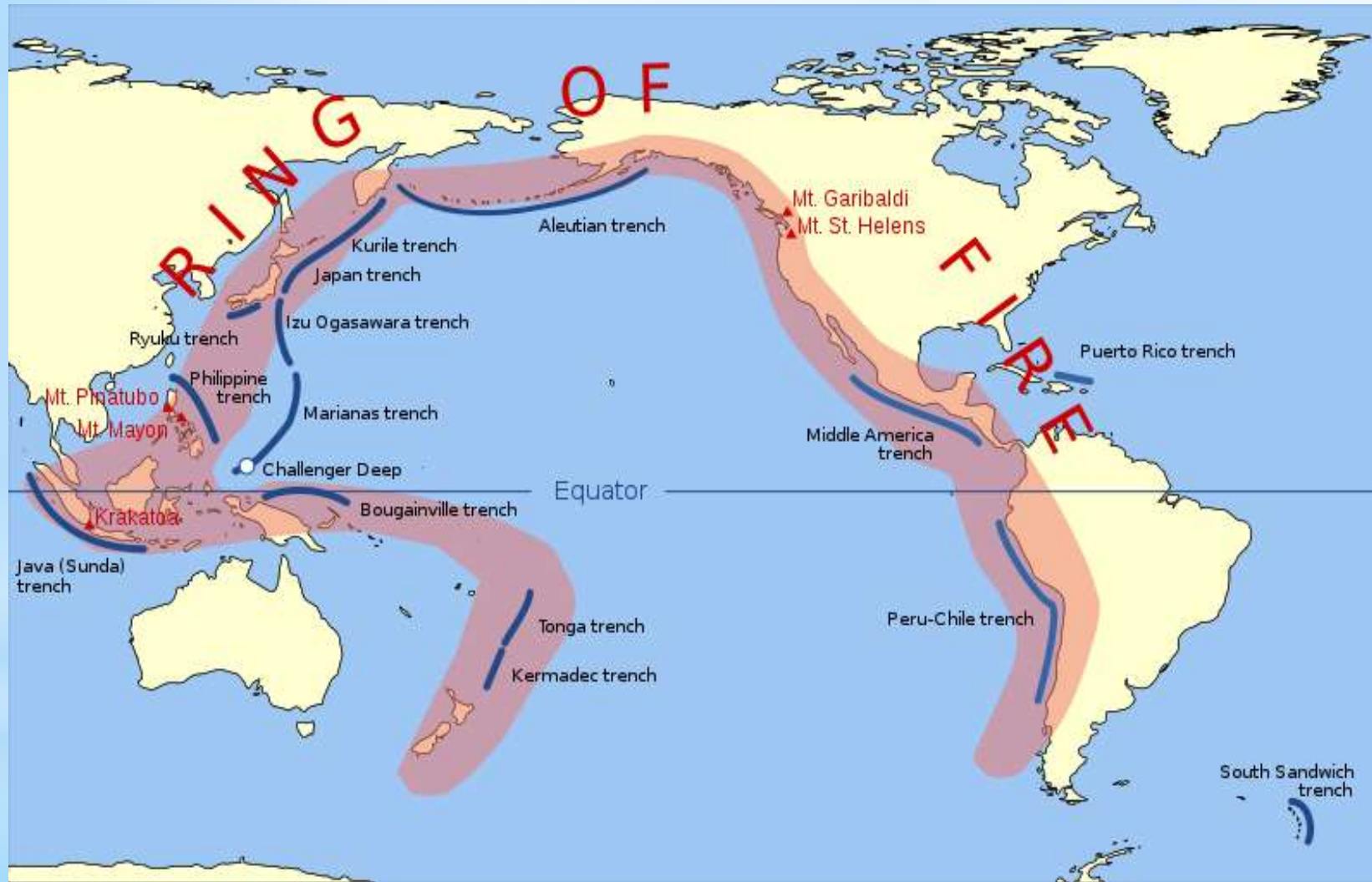
- * Like China, much of Japan is covered by mountains, in fact the islands that make up Japan are actually the tops of mountains that rise from the floor of the ocean.



- * About 188 of Japan's mountains are volcanic (Boso Peninsula, Chiba, Japan)

* Japan's Geography

* Many earthquakes occur in Japan, due to the fact that many islands are located along the **Pacific Ring of Fire**.



* **The Ring of Fire** - An extensive zone of volcanic and earthquake activity that coincides roughly with the borders of the Pacific Ocean.

* Japan's Geography

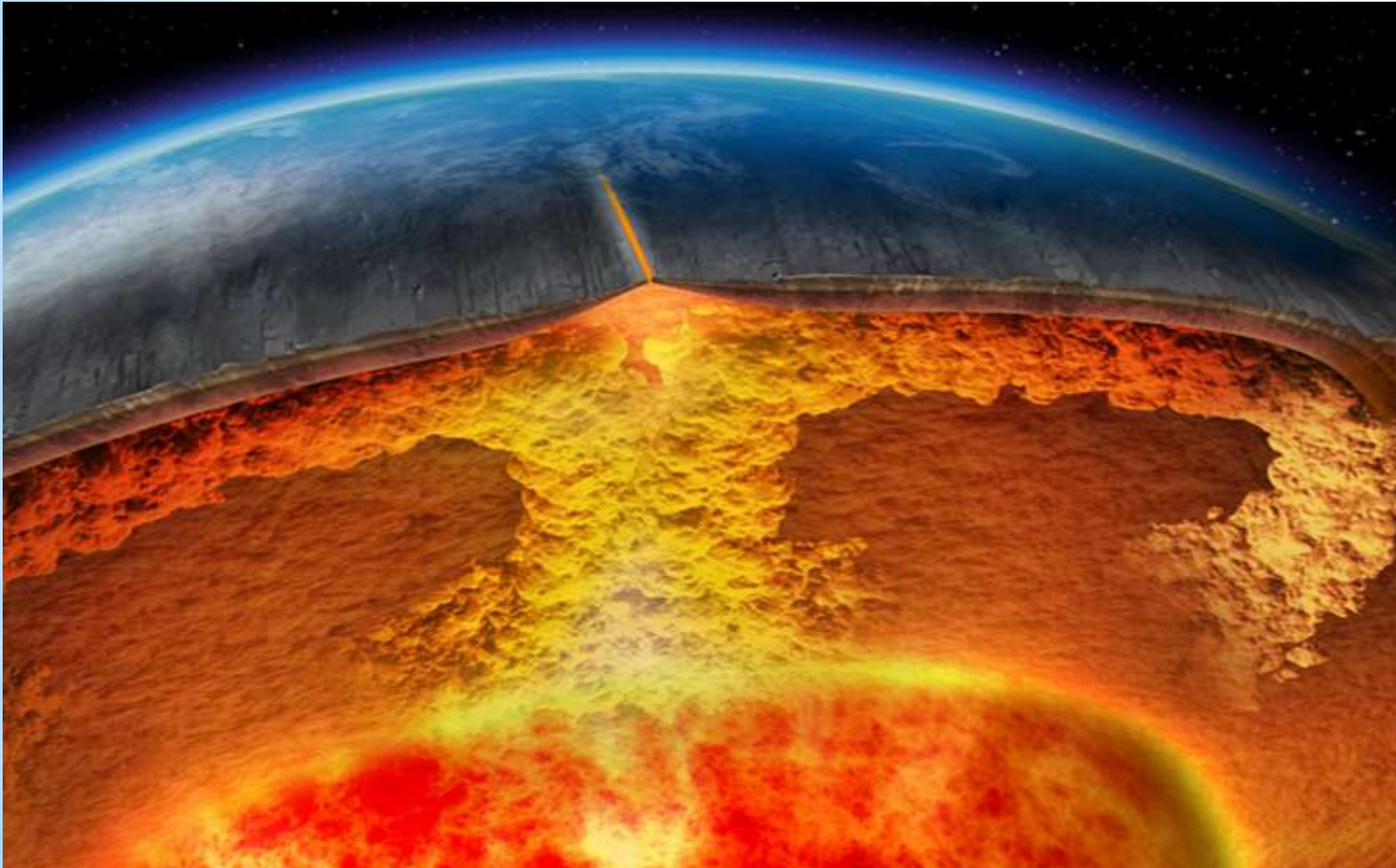


* Japan's Geography



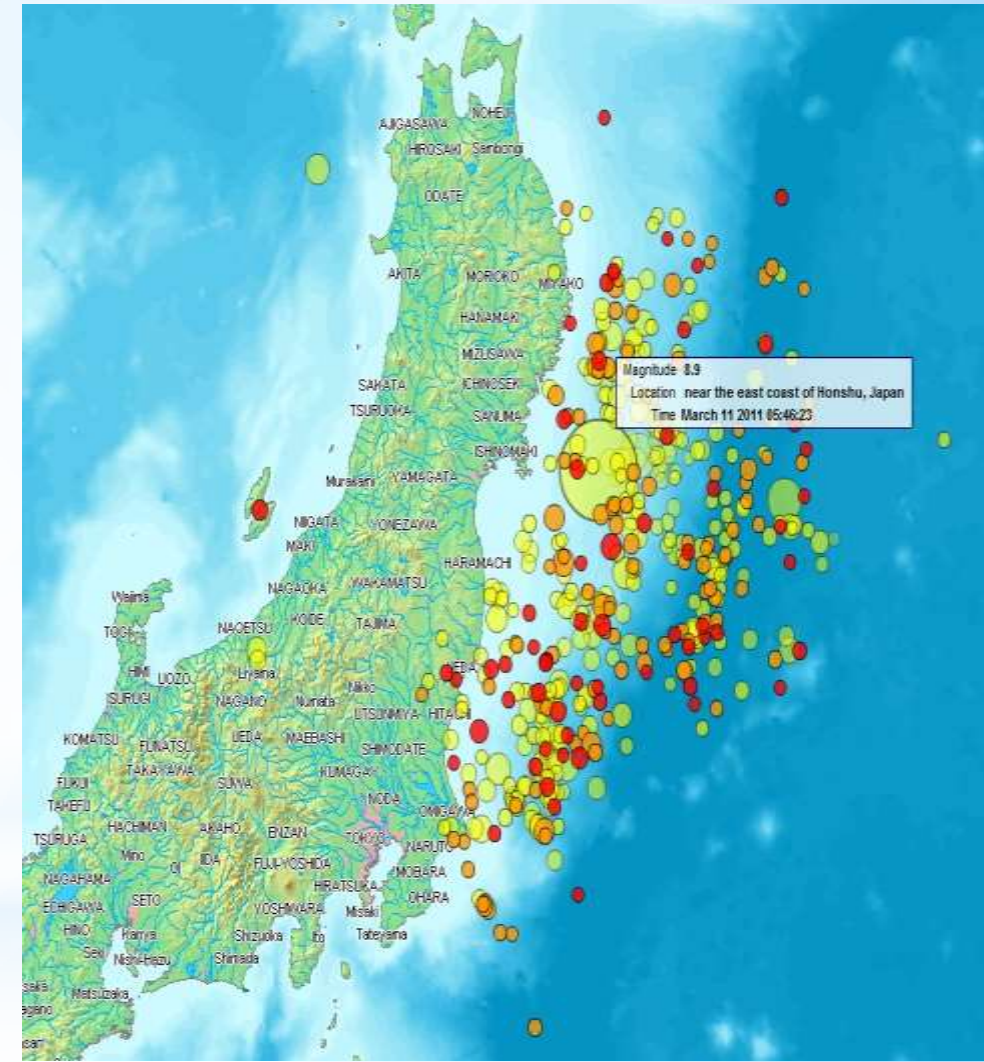
* Japan's Geography

* Due to the Pacific Ring of fire, Japan suffers constant earthquakes.



* Unfortunately the chain of islands lies in an area where parts of the earth's surface are constantly shifting.

* Japan's Geography

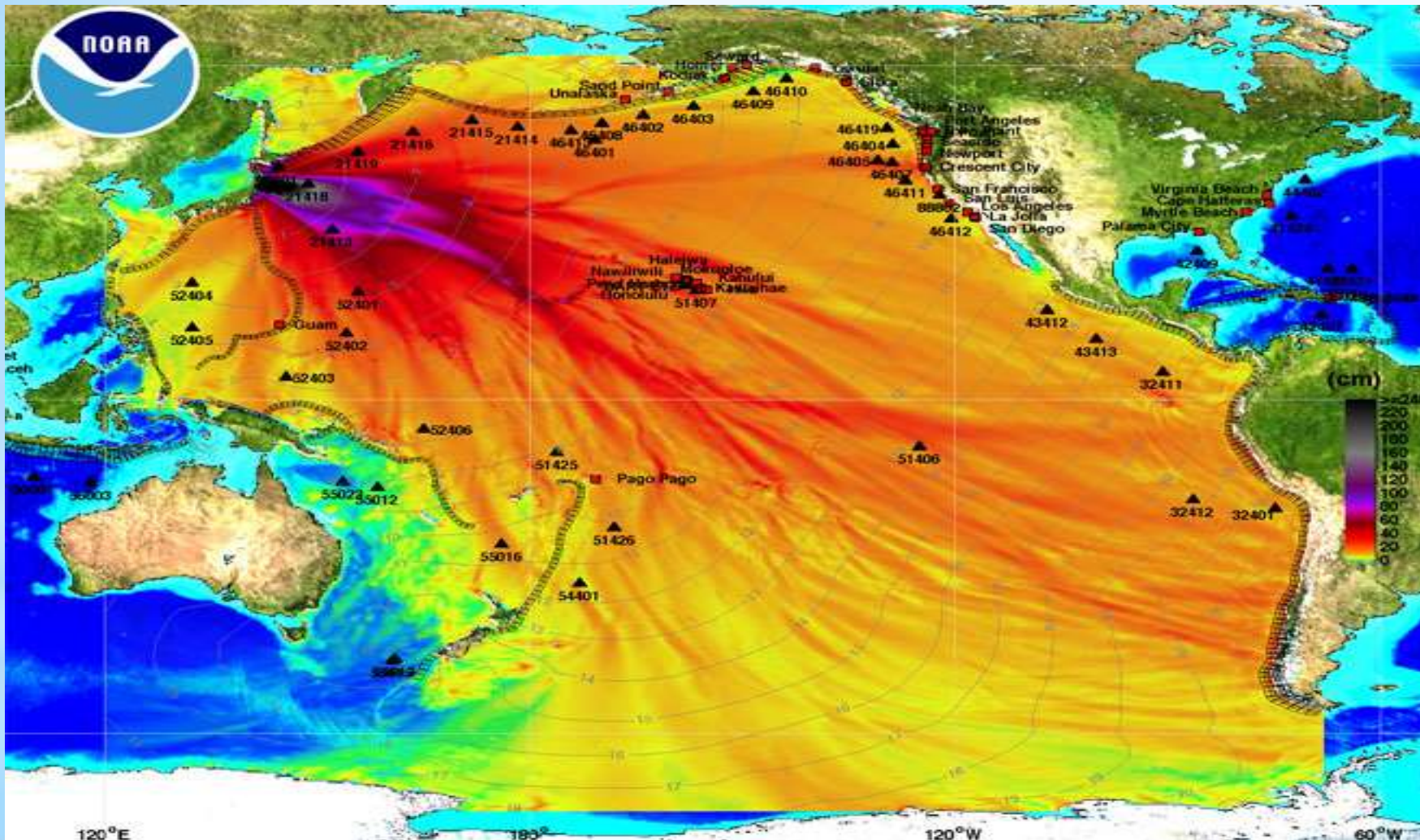


* The 2011 Tohoku earthquake and tsunami was a 9.0-magnitude undersea mega-thrust earthquake off the coast of Japan that occurred on Friday 11 March 2011.

***This Power Point was Created by Matthew Iannucci of North Plainfield New Jersey. If you are not Matthew Iannucci of North Plainfield New Jersey and are using this presentation then you have stolen it and should feel shameful and sad...however, you have great taste in stolen educational material...basically you are a mystery wrapped in an enigma, good luck with that.**

* Japan's Geography

* The earthquake triggered extremely destructive tsunami waves of up to 33 ft that struck Japan minutes after the quake, in some cases traveling up to 6 miles inland.



* Smaller waves reached many other countries after several hours.

* Japan's Geography



* Tsunami warnings were issued and evacuations ordered along Japan's Pacific coast and at least 20 other countries, including the entire Pacific coast of North America and South America.

* Japan's Geography

- * The earthquake and tsunami caused extensive and severe structural damage in Japan, including heavy damage to roads and railways as well as fires in many areas, and a major dam collapse.



- * Around 9.4 million households in northeastern Japan were left without electricity and 3.5 million without water.

* Japan's Geography



*Japan's Geography



* Japan's Geography



* The estimated total number of deaths reached about 30,000.

* Japan's Geography



* Japan's Geography

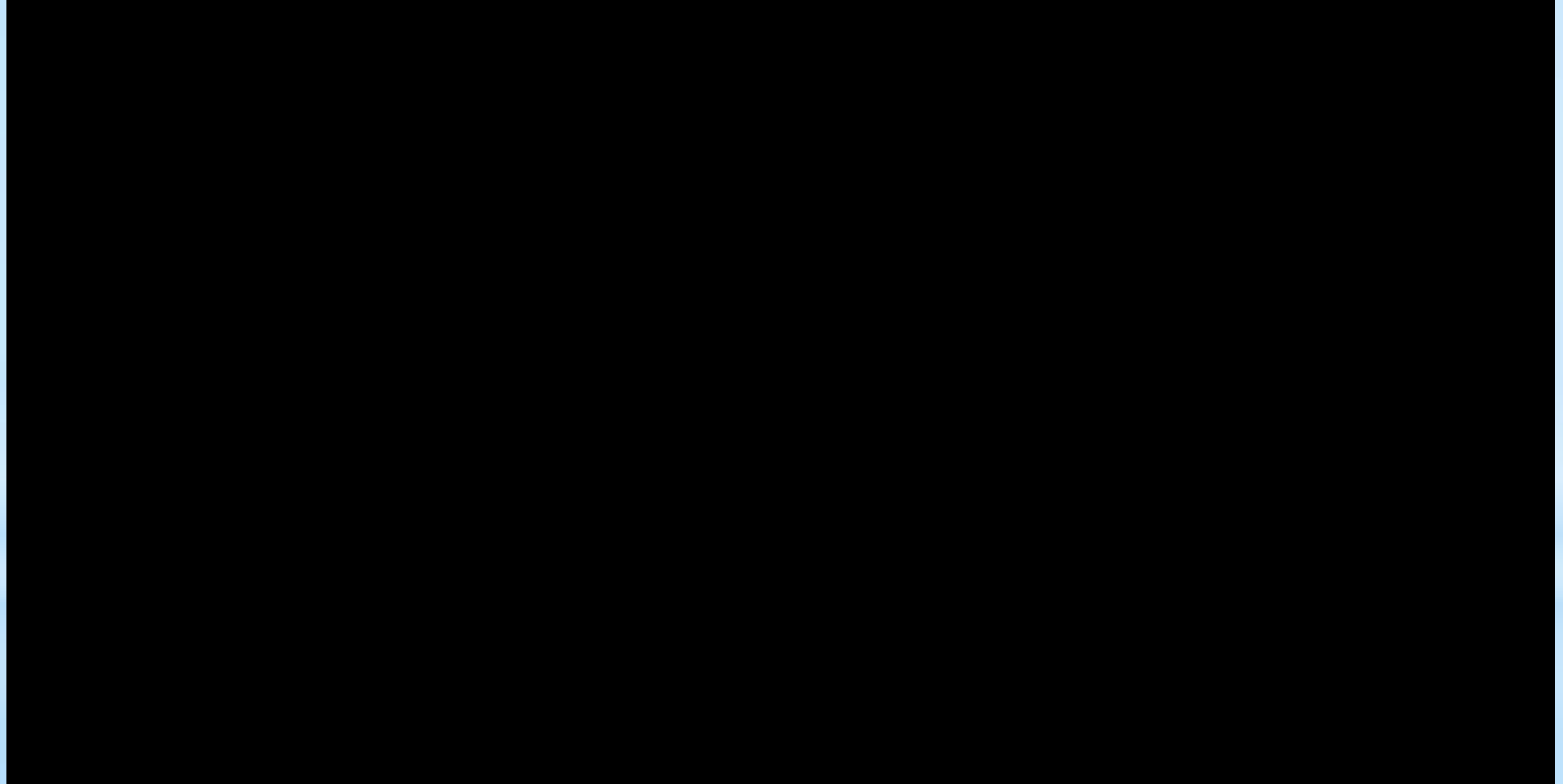


* Japan's Geography



***This Power Point was Created by Matthew Iannucci of North Plainfield New Jersey. If you are not Matthew Iannucci of North Plainfield New Jersey and are using this presentation then you have stolen it and should feel shameful and sad...however, you have great taste in stolen educational material...basically you are a mystery wrapped in an enigma, good luck with that.**

*Japan's Geography



* Japan's Geography

* Due to Japan's mountains, only about 20 percent of the country can be farmed.



* Throughout Japan's history, local armies often fought over the few patches of fertile farmland located throughout the tiny country.

* Japan's Geography

* Just like in Ancient Greece the rugged terrain forced many Japanese people to turn to the sea for a living.



* Later on in Japanese history this land would be constantly fought over by clans and imperial armies.

* Japan's Geography

* Early on, they settled in villages along the coast and created an extensive fishing industry.



* This industry still continues today and seafood is the staple for the Japanese diet.

* Japan's Geography



* The Sea surrounding Japan's islands made it easy for people in ships to travel along the coast and eventually from island to island.

* Japan's Geography



* This type of traveling really helped to encourage people to become merchants, traveling from village to village with goods to trade.

* Japan's Geography

* The vast ocean around Japan's islands, however, not only provided food and travel but kept the Japanese people isolated, or separate, from the rest of Asia.



* Japan's Geography



* As a result, Japan developed its own fiercely independent society, with a completely fascinating religion, art, literature and government.

* Japan's Geography

* Questions:

- * 1) What physical features make up the country of Japan and how many?
- * 2) Due to Japan's mountains, how much land is able to be farmed?
- * 3) What became an essential part of the Japanese diet thousands of years ago and continues to be a part of it today?
- * 4) What kept the people of Japan isolated?

* Japan's Geography

* Questions:

* 1) What physical features make up the country of Japan and how many?

* **Islands, over 3,000**

* 2) Due to Japan's mountains, how much land is able to be farmed?

* **20% of its land can be farmed**

* 3) What became an essential part of the Japanese diet thousands of years ago and continues to be a part of it today?

* **Fish / Seafood**

* 4) What kept the people of Japan isolated?

* **The vast ocean around Japan's islands**

* Current Geography Issues in Japan

* Today Japan has actually created “Fish Farms” to help increase their food supply.



* In “Fish Farms” tuna that is caught in the ocean are brought back to grow larger in a relative safe environments.

***This Power Point was Created by Matthew Iannucci of North Plainfield New Jersey. If you are not Matthew Iannucci of North Plainfield New Jersey and are using this presentation then you have stolen it and should feel shameful and sad...however, you have great taste in stolen educational material...basically you are a mystery wrapped in an enigma, good luck with that.**

* Current Geography Issues in Japan

* They then raise the fish for several months in a way that increases the amount of tasty fat in their meat.



* Fatty tuna meat is called **toro** and is a favorite and expensive delicacy in sushi restaurants, about 20% of wild tuna consists of toro, with modern fish farming raising it as high as 95%.

*Current Geography Issues in Japan



* Current Geography Issues in Japan



* Current Geography Issues in Japan

* Japan also had to come up with different ways of farming with their limited land.



* In fact, Japan has been using these advanced underground farming technologies for several years

* Current Geography Issues in Japan

* This has been deemed Japan's urban underground farming concept.



* The first Japanese urban underground farm is set up in 2005 in and around Tokyo

* Current Geography Issues in Japan



* Pasona Urban Farm

* Current Geography Issues in Japan



*Current Geography Issues in Japan



* Current Geography Issues in Japan



* Current Geography Issues in Japan



* Square Watermelons...

* Current Geography Issues in Japan



* Current Geography Issues in Japan



* Recently Japan has had many issues involving their **Whaling Industry**...any ideas why?

* Current Geography Issues in Japan

* The official reason that Japan gives for whale hunting is "scientific research", saying the only way to determine the whale's age is to kill it.



* The purpose of the "research" is to prove that whale populations have improved enough to allow commercial whaling which was banned by the International Whaling Commission in 1986.

*Current Geography Issues in Japan



***This Power Point was Created by Matthew Iannucci of North Plainfield New Jersey. If you are not Matthew Iannucci of North Plainfield New Jersey and are using this presentation then you have stolen it and should feel shameful and sad...however, you have great taste in stolen educational material...basically you are a mystery wrapped in an enigma, good luck with that.**

* Current Geography Issues in Japan



* Current Geography Issues in Japan

* However, the whale meat is sold as a delicacy, and is likely the real reason for the whale hunting.



* In recent years activists have disrupted whale hunting in the arctic.

* Current Geography Issues in Japan



* Shark fin soup is a popular soup item of Japanese cuisine usually served at special occasions such as weddings and banquets, or as a luxury item in the Japanese culture.

*Current Geography Issues in Japan

*Questions:

*1) How are Japanese Fish Farms used?

*2)) What is the name of the underground farms in Japan called and how does it work?

*3) What are some of the key issues with Japanese Whaling Vessels?

*Current Geography Issues in Japan

*Questions:

*1) How are Japanese Fish Farms used?

*They help to grow fish so they can feed larger populations

*2)) What is the name of the underground farms in Japan called and how does it work?

*Parsona Urban Farm, artificial sunlight is used to simulate the sun to grow crops

*3) What are some of the key issues with Japanese Whaling Vessels?

*It is illegal to whale, piracy and endangered species

* Geography of Japan

* Japan's Geography isolated the country and helped form its unique culture.

* 1) List from north to south, the four major islands that make up the majority of Japan?

* 2) What body of water separates Japan from mainland Asia?



* Geography of Japan

* **Japan's Geography isolated the country and helped form its unique culture.**

* **1)** List from north to south, the four major islands that make up the majority of Japan?

* **Hokkaido, Honshu, Shikoku and Kyushu**

* **2)** What body of water separates Japan from mainland Asia?

* **Sea of Japan**



* Geography of Japan

* Reading Check:

* Complete the following question in a one to two paragraph, open ended response.

*** How did Japan's geography shape its astonishing society? Why would this help to shape Japans future?**

***This Power Point was Created by Matthew Iannucci of North Plainfield New Jersey. If you are not Matthew Iannucci of North Plainfield New Jersey and are using this presentation then you have stolen it and should feel shameful and sad...however, you have great taste in stolen educational material...basically you are a mystery wrapped in an enigma, good luck with that.**

* Geography of Japan

* MAP TIME!!!



*Geography of Japan